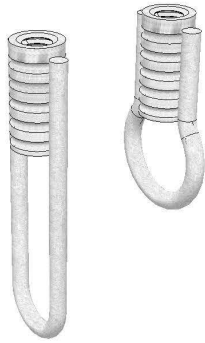
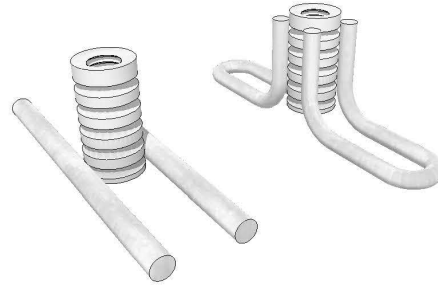


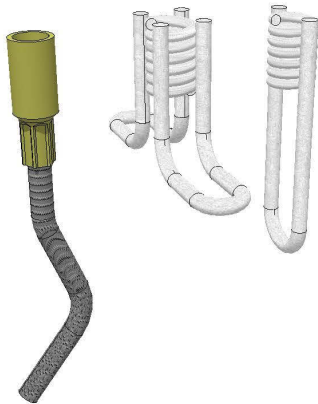
STANDARD INSERTS



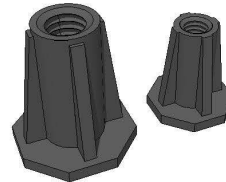
THREADED INSERTS
Used where adjustment is not required.



THREADED THIN SLAB INSERTS
Similar to Threaded Inserts but used for thin sections.



METRIC & COIL THREADED INSERTS
Used for handling and lifting. Not to be used for attachment.



NON-FERROUS THREADED INSERT
Used in non-load bearing applications.