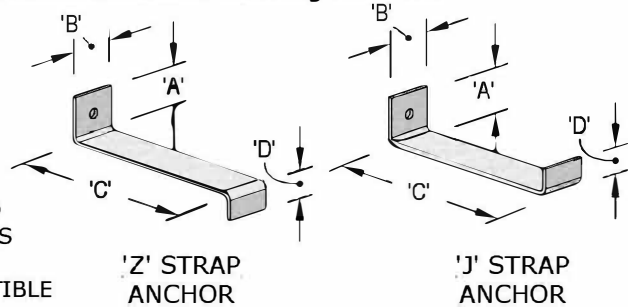
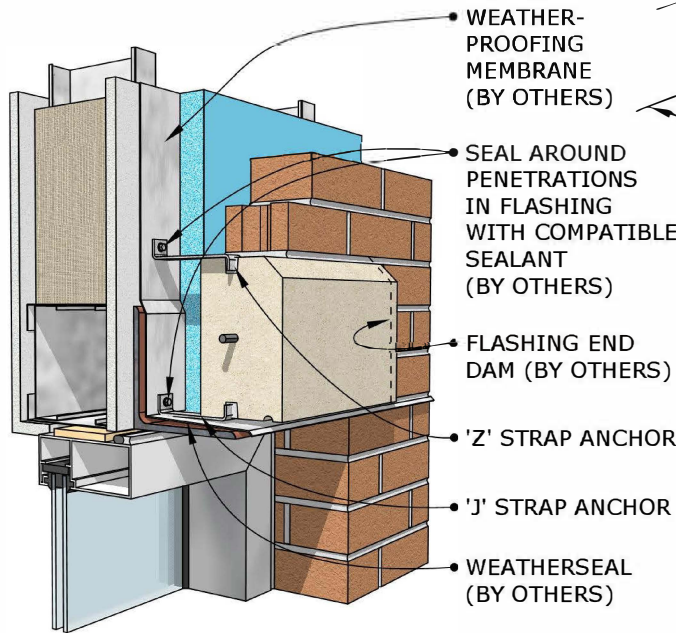


Anchoring and Flashing Details

These are typical connections recommended by the Cast Stone Institute for similar applications. Consult your engineer for size and connection requirements before ordering anchors.

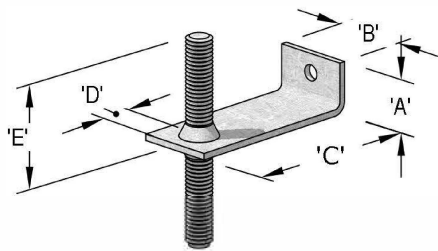
DETAIL 1 - 'Z' & 'J' STRAP ANCHOR @ HEADER



- Strap sizes per engineering requirements
- Typical 'A' dimensions are 1"-2".
- Typical 'B' dimensions are 1"-2".
- Typical 'C' dimensions are from center of stone to the face of the sheathing/outside face of wall structure.
- Typical 'D' dimensions are 3/4"-1".
- Typical thru hole diameter is 1/16" larger than the fastener diameter. For example, using a 1/4"φ self tapping metal screw, the diameter would be 5/16"φ.

ALL MEMBRANES, WEEPS, SEALANT & FLASHING PER PROJECT MOISTURE CONTROL CONSULTANT

DETAIL 2 - 'L' STRAP W/ WELDED ALL THREAD DOWEL PIN @ JAMB



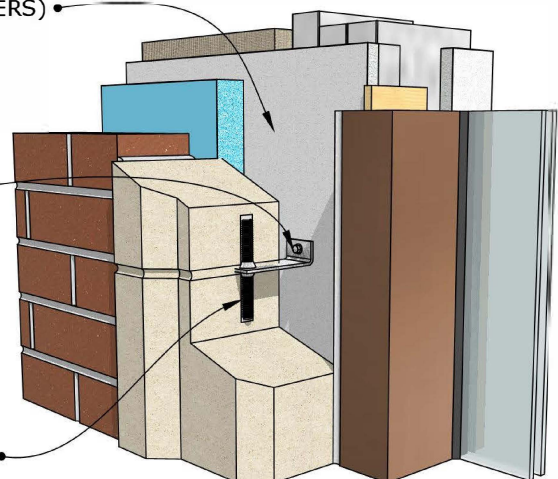
'L' STRAP W/ WELDED ALL THREAD DOWEL PIN

- Strap sizes per engineering requirements
- Typical 'A' dimensions are 1"-2".
- Typical 'B' dimensions are 1"-2".
- Typical 'C' dimensions are from center of stone to the face of the sheathing/outside face of wall structure.
- Typical 'D' dimensions are 3/4"-1".
- Typical 'E' dimensions are 1-1/2"-2".
- Typical thru hole diameter is 1/16" larger than the fastener diameter. For example, using a 1/4"φ self tapping metal screw, the diameter would be 5/16"φ

WEATHER-PROOFING MEMBRANE (BY OTHERS)

SEAL AROUND PENETRATIONS IN FLASHING WITH COMPATIBLE SEALANT (BY OTHERS)

'L' STRAP W/ WELDED ALL THREAD DOWEL PIN

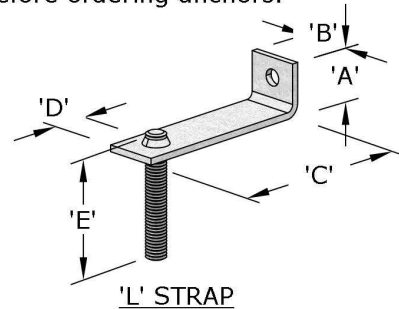
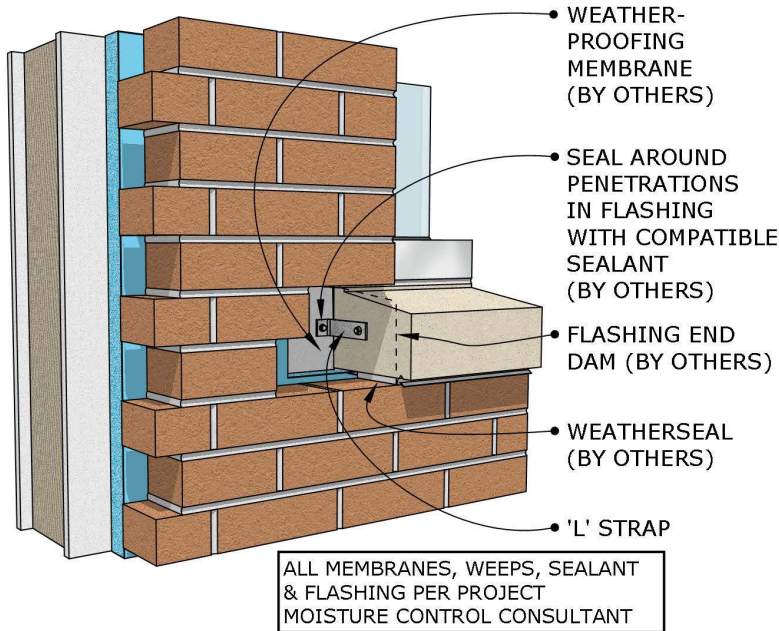


ALL MEMBRANES, WEEPS, SEALANT & FLASHING PER PROJECT MOISTURE CONTROL CONSULTANT

Anchoring and Flashing Details

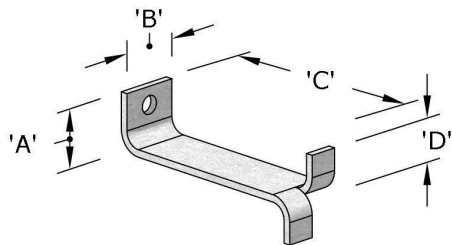
These are typical connections recommended by the Cast Stone Institute for similar applications. Consult your engineer for size and connection requirements before ordering anchors.

DETAIL 3 - 'L' STRAP W/ WELDED DOWEL PIN @ SILL



- Strap sizes per engineering requirements
- Typical 'A' dimensions are 1"-2".
- Typical 'B' dimensions are 1"-2".
- Typical 'C' dimensions are from center of stone to the face of the sheathing/outside face of wall structure.
- Typical 'D' dimensions are 3/4"-1".
- Typical thru hole diameter is 1/16" larger than the fastener diameter. For example, using a 1/4"φ self tapping metal screw, the diameter would be 5/16"φ.
- Typical thru hole size is 1/2" larger than the welded pin diameter.

DETAIL 4 - 'SPLIT TAIL' STRAP @ VENEER



'SPLIT TAIL' STRAP

- Strap sizes per engineering requirements
- Typical 'A' dimensions are 1"-2".
- Typical 'B' dimensions are 1"-2".
- Typical 'C' dimensions are from center of stone to the face of the sheathing/outside face of wall structure.
- Typical 'D' dimensions are 3/4"-1".
- Typical thru hole diameter is 1/16" larger than the fastener diameter. For example, using a 1/4"φ self tapping metal screw, the diameter would be 5/16"φ

ALL MEMBRANES, WEEPS, SEALANT & FLASHING PER PROJECT MOISTURE CONTROL CONSULTANT

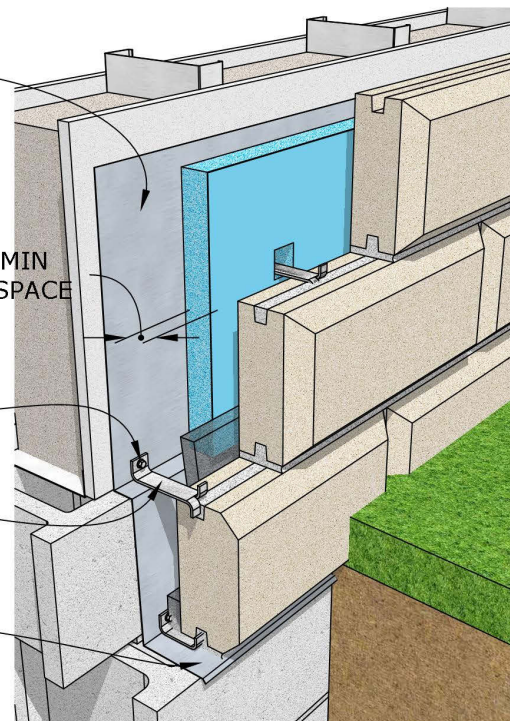
WEATHER-PROOFING MEMBRANE (BY OTHERS)

SEAL AROUND PENETRATIONS IN FLASHING WITH COMPATIBLE SEALANT, TYP. (BY OTHERS)

'SPLIT TAIL' STRAP

FLASHING & WEATHERSEAL (BY OTHERS)

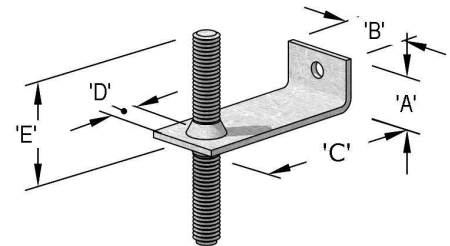
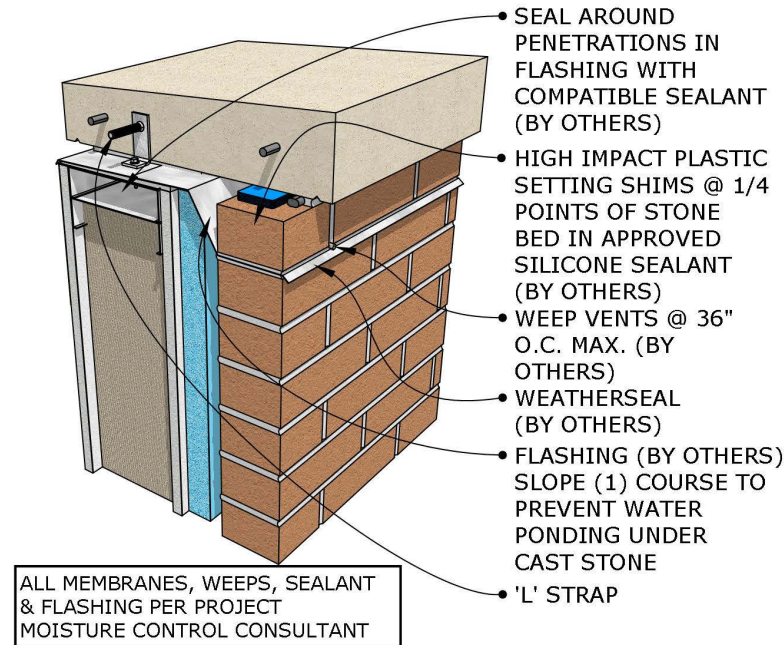
1" MIN AIR SPACE



Anchoring and Flashing Details

These are typical connections recommended by the Cast Stone Institute for similar applications. Consult your engineer for size and connection requirements before ordering anchors.

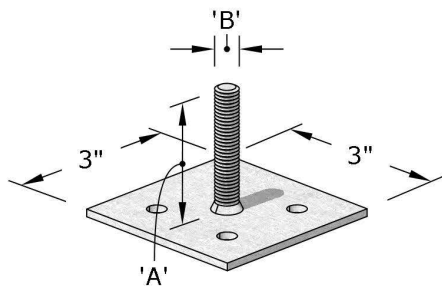
DETAIL 5 - 'L' STRAP W/ WELDED DOWEL PIN @ COPING



'L' STRAP W/ WELDED ALL THREAD DOWEL PIN

- Strap sizes per engineering requirements
- Typical 'A' dimensions are 1"-2".
- Typical 'B' dimensions are 1"-2".
- Typical 'C' dimensions are from center of stone to the face of the sheathing/outside face of wall structure.
- Typical 'D' dimensions are 3/4"-1".
- Typical 'E' dimensions are 1-1/2"-2".
- Typical thru hole diameter is 1/16" larger than the fastener diameter. For example, using a 1/4"φ self tapping metal screw, the diameter would be 5/16"φ

DETAIL 6 - WELDED DOWEL PIN AND PLATE @ COPING

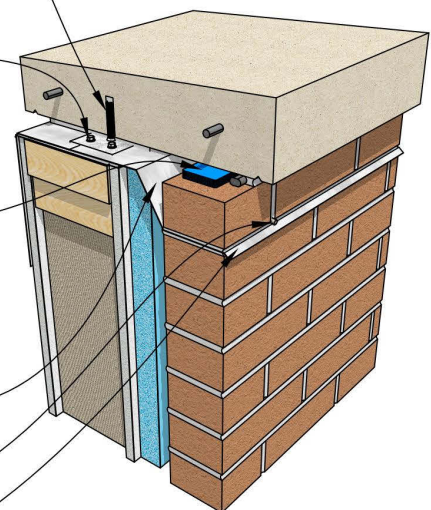


WELDED DOWEL PIN AND PLATE

- Strap sizes per engineering requirements
- Typical 'A' dimensions are 2"-3".
- Typical 'B' dimensions are 3/8"φ-1"φ with the most commonly used size is 1/2"φx2"LG. Field drill 1"φx2" hole and fill with epoxy.
- Typical dowel hole size is 1/2" larger than dowel pin.

ALL MEMBRANES, WEEPS, SEALANT & FLASHING PER PROJECT MOISTURE CONTROL CONSULTANT

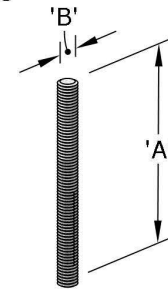
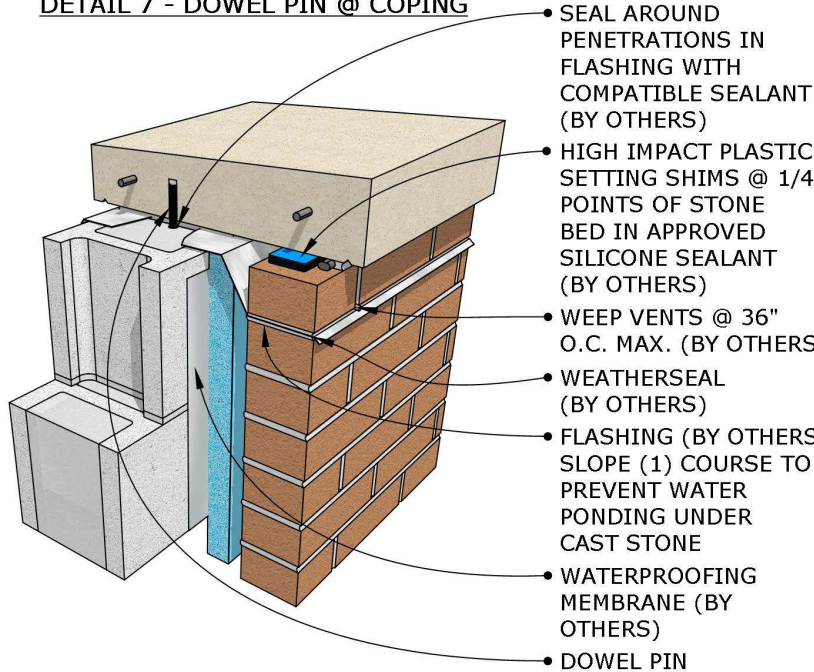
- WELDED DOWEL PIN AND PLATE
- SEAL AROUND PENETRATIONS IN FLASHING WITH COMPATIBLE SEALANT (BY OTHERS)
- HIGH IMPACT PLASTIC SETTING SHIMS @ 1/4 POINTS OF STONE BED IN APPROVED SILICONE SEALANT (BY OTHERS)
- FLASHING (BY OTHERS) SLOPE (1) COURSE TO PREVENT WATER PONDING UNDER CAST STONE
- WEEP VENTS @ 36" O.C. MAX. (BY OTHERS)
- WEATHERSEAL (BY OTHERS)



Anchoring and Flashing Details

These are typical connections recommended by the Cast Stone Institute for similar applications. Consult your engineer for size and connection requirements before ordering anchors.

DETAIL 7 - DOWEL PIN @ COPING

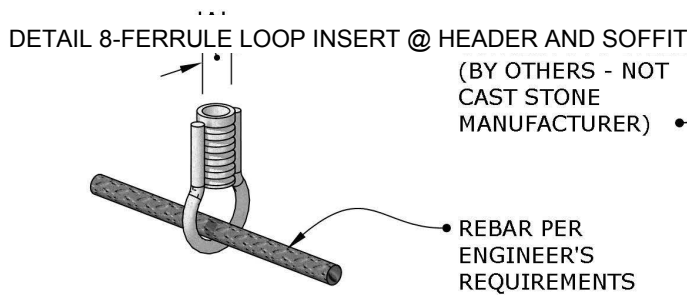


DOWEL PIN

- Pin sizes per engineering requirements
- Typical 'A' dimensions are 2"-6" with the most common being 4".
- Typical 'B' dimensions are 3/8"-1" depending on the size of the stone. The most commonly used are 1/2"φx4"LG. Field drill 1"φx2" deep hole into filled CMU and fill with non-shrink grout. The typical hole size is 1/2" larger than the dowel pin.

ALL MEMBRANES, WEEPS, SEALANT & FLASHING PER PROJECT MOISTURE CONTROL CONSULTANT

DETAIL 8 - FERRULE LOOP INSERT @ HEADER AND SOFFIT

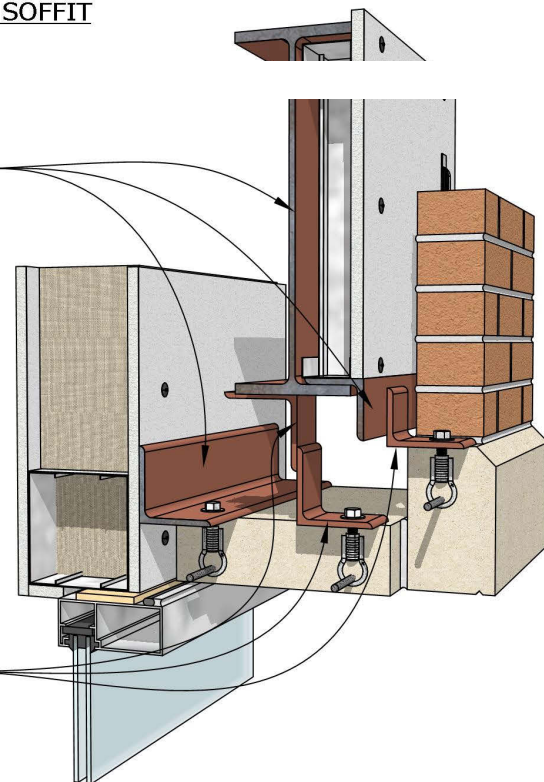


NC FERRULE LOOP INSERT

- NC Ferrule Loop sizes per engineering requirements
- Typical 'A' dimensions are 3/8"φ-1"φ with the most common size being 1/2"φ.

ALL MEMBRANES, WEEPS, SEALANT & FLASHING PER PROJECT MOISTURE CONTROL CONSULTANT

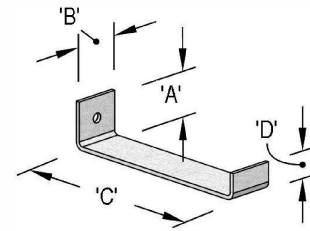
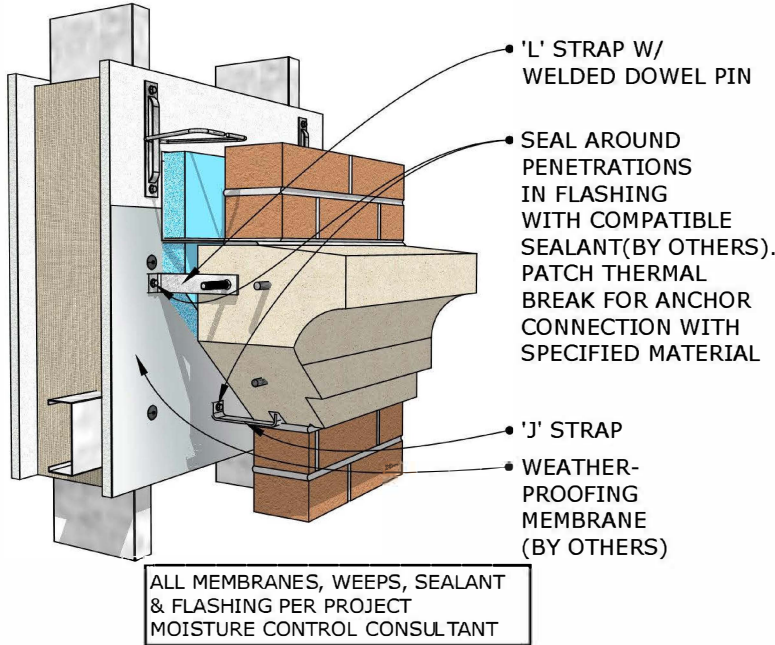
CLIP ANGLES AS SPECIFIED BY ENGINEER



Anchoring and Flashing Details

These are typical connections recommended by the Cast Stone Institute for similar applications. Consult your engineer for size and connection requirements before ordering anchors.

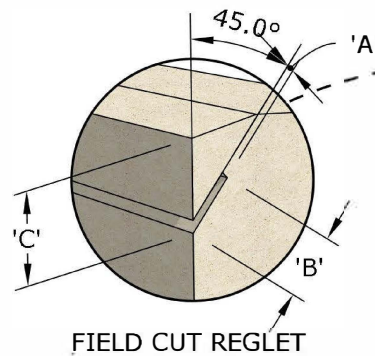
DETAIL 9 - TYPICAL ANCHORAGE @ CORNICE



'J' ANCHOR

- Strap sizes per engineering requirements
- Typical 'A' dimensions are 1"-2".
- Typical 'B' dimensions are 1"-2".
- Typical 'C' dimensions are from center of stone to the face of the sheathing/outside face of wall structure.
- Typical 'D' dimensions are 3/4"-1".
- Typical thru hole diameter is 1/16" larger than the fastener diameter. For example, using a 1/4"φ self tapping metal screw, the diameter would be 5/16"φ.

DETAIL 10 - FIELD CUT REGLET



- Typical installer field cut reglet. Fill with construction adhesive and add flashing by installer.
- Typical 'A' dimensions are 1/4"-1/2".
- Typical 'B' dimensions are 1"-2".
- Minimum 'C' dimension is 3".

