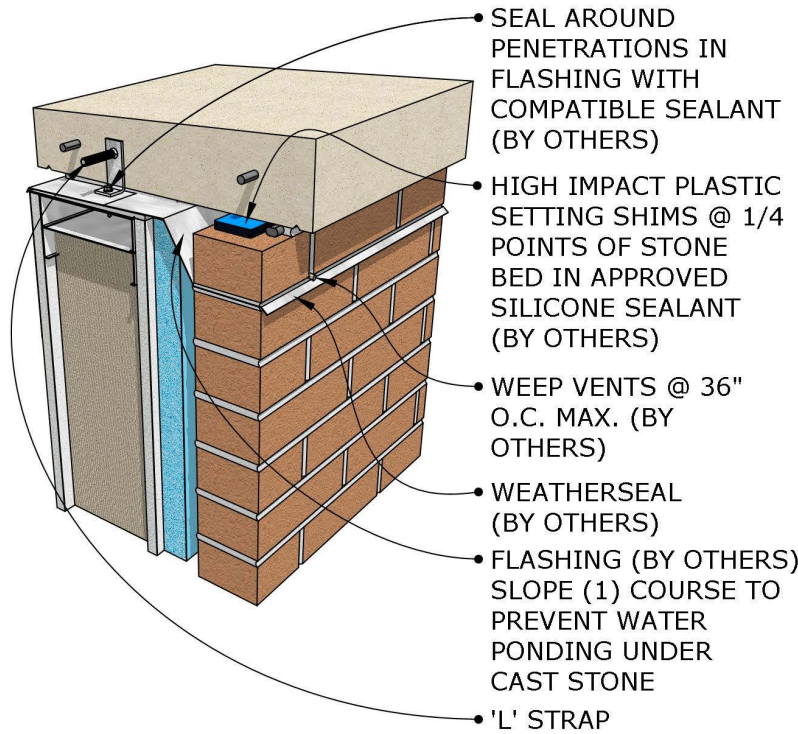
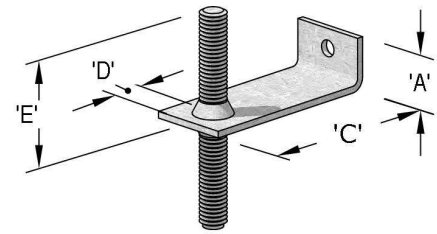


COPING - DETAIL #1



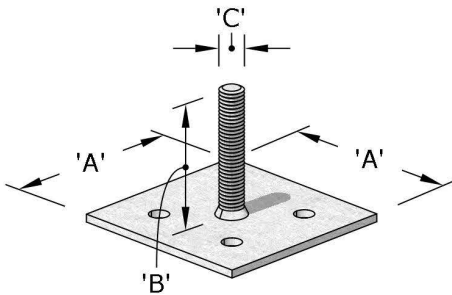
ALL MEMBRANES, WEEPS, SEALANT & FLASHING PER PROJECT MOISTURE CONTROL CONSULTANT



'L' STRAP W/ WELDED OR NON-WELDED ALL THREAD DOWEL PIN

- Strap/pin sizes per engineering requirements
- Typical 'A' dimensions are 1"-2".
- Typical 'B' dimensions are 1"-2".
- Typical 'C' dimensions are from center of stone to the face of the sheathing/outside face of wall structure.
- Typical 'D' dimensions are 3/4"-1".
- Typical 'E' dimensions are 1-1/2"-2".
- Typical thru hole diameter is 1/16" larger than the fastener diameter. For example, using a 1/4"φ self tapping metal screw, the diameter would be 5/16"φ

COPING - DETAIL #2



WELDED DOWEL PIN AND PLATE

- Typical 'A' dimensions per engineering requirements.
- Typical 'B' dimensions are 2"-3" with the most common being 2".
- Typical 'C' dimensions are 3/8"φ-1"φ depending on the size of the stone. The most commonly used size is 1/2"φx2"LG. Field drill 1"φx2" hole and fill with epoxy.
- Typical dowel hole size is 1/2" larger than dowel pin.

ALL MEMBRANES, WEEPS,
SEALANT & FLASHING PER
PROJECT MOISTURE
CONTROL CONSULTANT

WELDED DOWEL
PIN AND PLATE

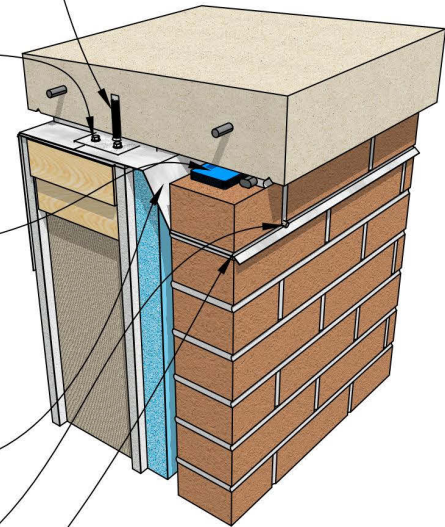
SEAL AROUND
PENETRATIONS IN
FLASHING WITH
COMPATIBLE SEALANT
(BY OTHERS)

HIGH IMPACT PLASTIC
SETTING SHIMS @ 1/4
POINTS OF STONE
BED IN APPROVED
SILICONE SEALANT
(BY OTHERS)

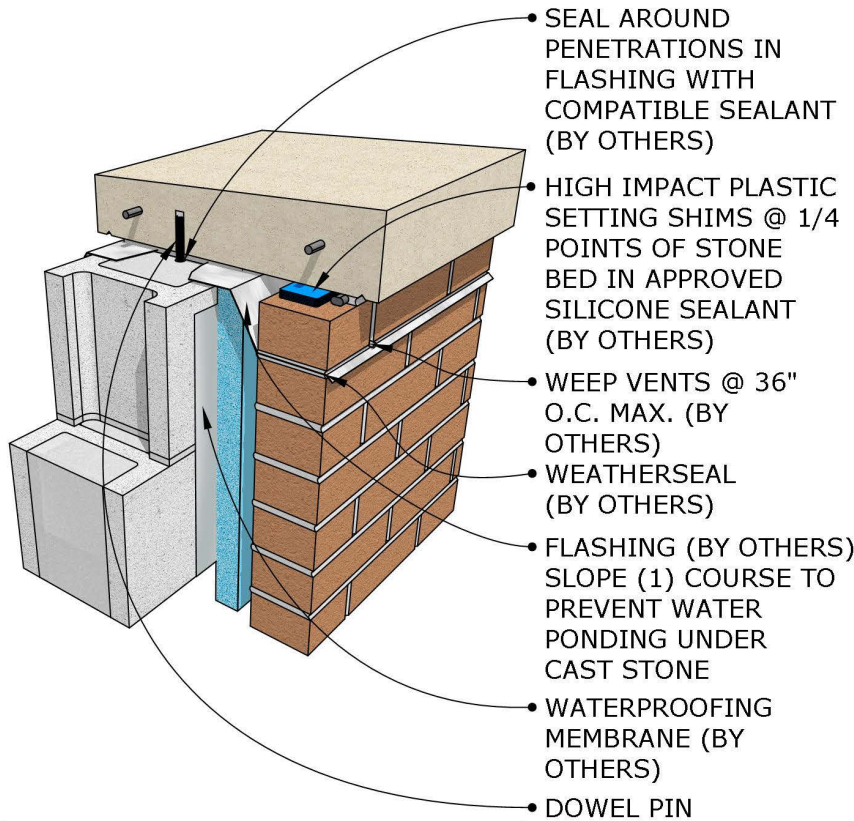
FLASHING
(BY OTHERS).
SLOPE (1) COURSE
TO PREVENT
WATER PONDING
UNDER CAST STONE

WEEP VENTS @ 36"
O.C. MAX. (BY
OTHERS)

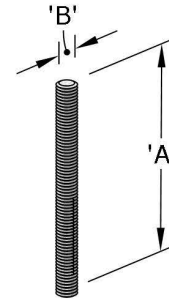
WEATHERSEAL
(BY OTHERS)



COPING - DETAIL #3



ALL MEMBRANES, WEEPS, SEALANT & FLASHING PER PROJECT MOISTURE CONTROL CONSULTANT



DOWEL PIN

- Dowel pin sizes per engineering requirements
- Typical 'A' dimensions are 2"-6" with the most common being 4".
- Typical 'B' dimensions are 3/8"-1" depending on the size of the stone. The most commonly used are 1/2"φx4"LG. Field drill 1"φx2" deep hole into filled CMU and fill with non-shrink grout. The typical hole size is 1/2" larger than the dowel pin.