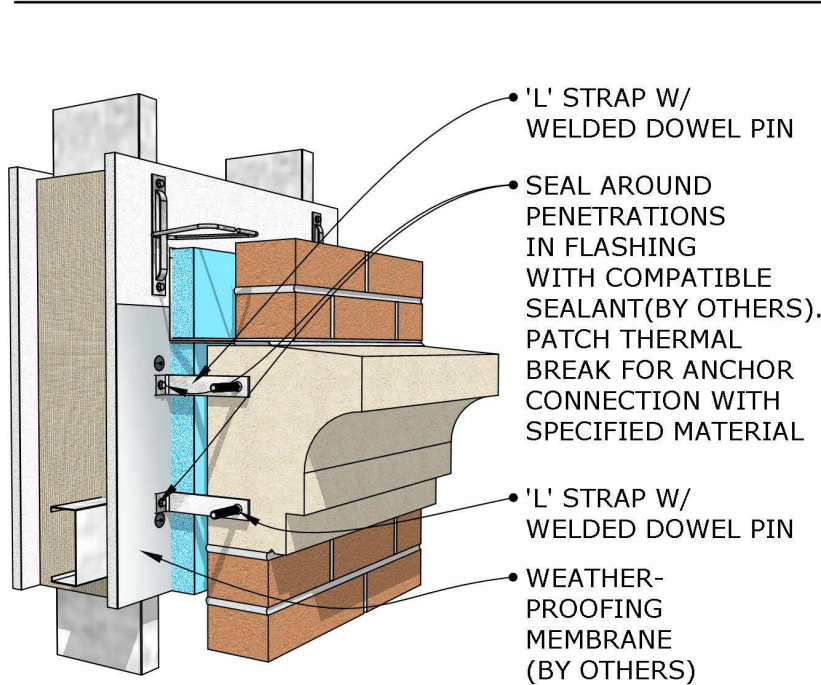
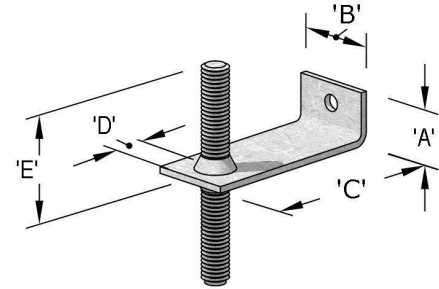


### **CORNICE - DETAIL # 1**



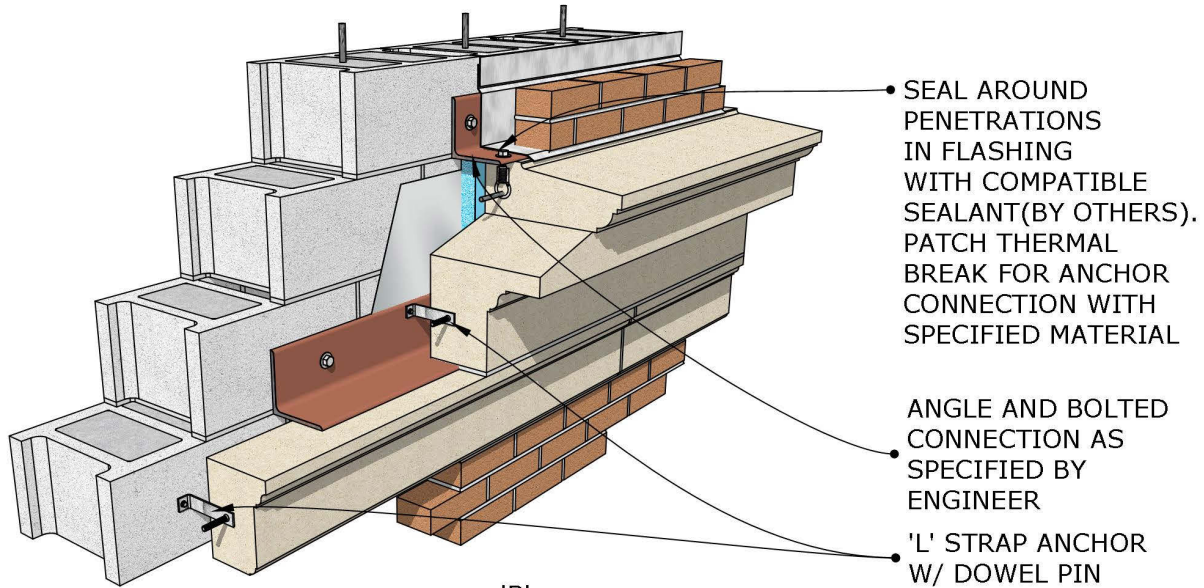
ALL MEMBRANES, WEEPS, SEALANT  
& FLASHING PER PROJECT  
MOISTURE CONTROL CONSULTANT



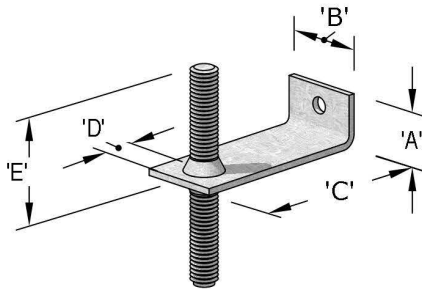
**'L' STRAP W/ WELDED OR NON-  
WELDED ALL THREAD DOWEL PIN**

- Strap/pin sizes per engineering requirements
- Typical 'A' dimensions are 1"-2".
- Typical 'B' dimensions are 1"-2".
- Typical 'C' dimensions are from center of stone to the face of the sheathing/outside face of wall structure.
- Typical 'D' dimensions are 3/4"-1".
- Typical 'E' dimensions are 1-1/2"-2".
- Typical thru hole diameter is 1/16" larger than the fastener diameter. For example, using a 1/4"φ self tapping metal screw, the diameter would be 5/16"φ

## **CORNICE - DETAIL #2**



ALL MEMBRANES, WEEPS, SEALANT & FLASHING PER PROJECT MOISTURE CONTROL CONSULTANT



### **'L' STRAP W/ WELDED OR NON-WELDED ALL THREAD DOWEL PIN**

- Strap/pin sizes per engineering requirements
- Typical 'A' dimensions are 1"-2".
- Typical 'B' dimensions are 1"-2".
- Typical 'C' dimensions are from center of stone to the face of the sheathing/outside face of wall structure.
- Typical 'D' dimensions are 3/4"-1".
- Typical 'E' dimensions are 1-1/2"-2".
- Typical thru hole diameter is 1/16" larger than the fastener diameter. For example, using a 1/4"φ self tapping metal screw, the diameter would be 5/16"φ