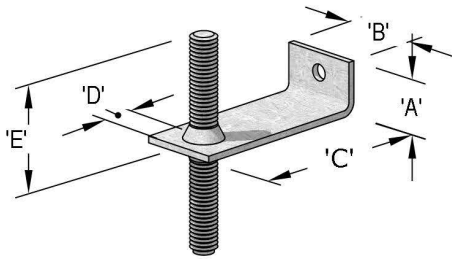


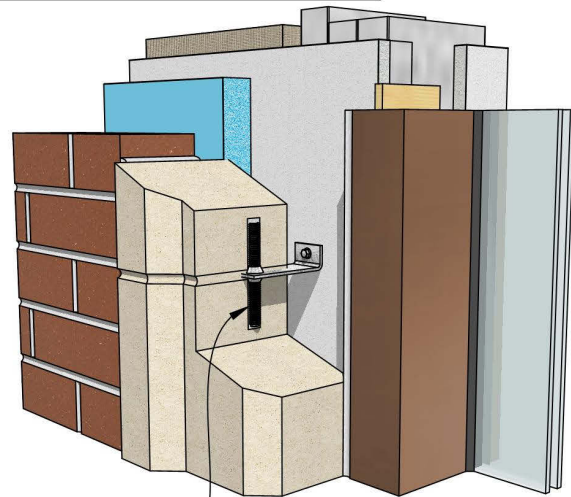
JAMB - DETAIL #1



ALL MEMBRANES, WEEPS, SEALANT
& FLASHING PER PROJECT
MOISTURE CONTROL CONSULTANT

'L' PIN STRAP W/ WELDED OR NON- WELDED ALL THREAD DOWEL PIN

- Strap sizes per engineering requirements
- Typical 'A' dimensions are 1"-2".
- Typical 'B' dimensions are 1"-2".
- Typical 'C' dimensions are from center of stone to the face of the sheathing/outside face of wall structure.
- Typical 'D' dimensions are 3/4"-1".
- Typical 'E' dimensions are 1-1/2"-2".
- Typical thru hole diameter is 1/16" larger than the fastener diameter. For example, using a 1/4"φ self tapping metal screw, the diameter would be 5/16"φ



'L' STRAP W/ ALL
THREAD DOWEL PIN