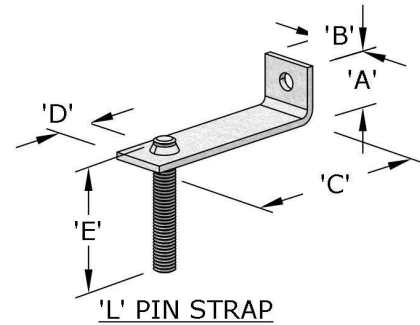
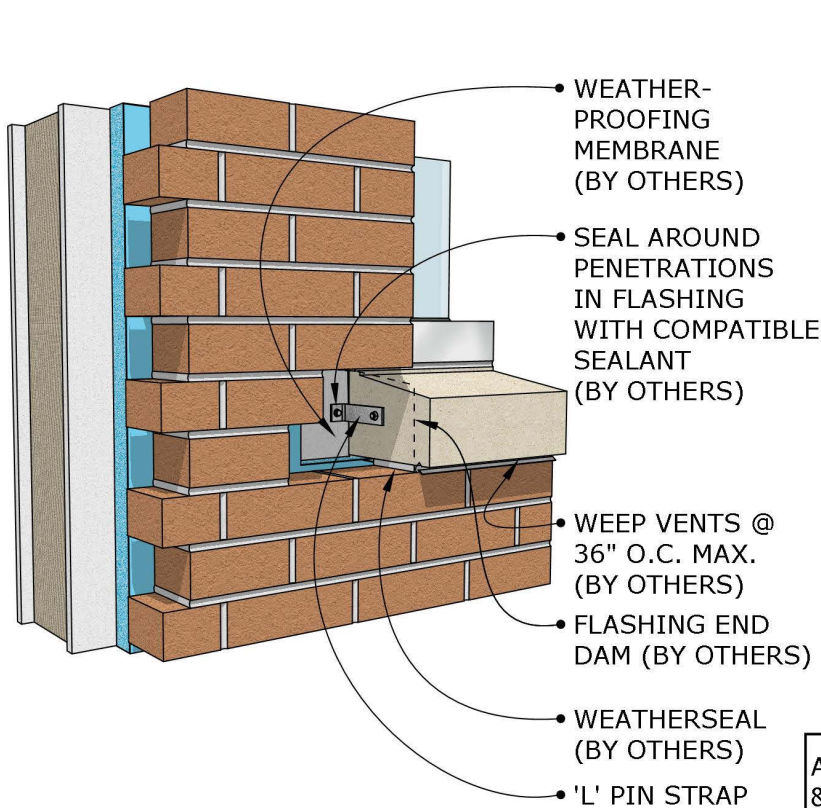


SILL - DETAIL #1



- Strap/pin sizes per engineering requirements
- Typical 'A' dimensions are 1"-2".
- Typical 'B' dimensions are 1"-2".
- Typical 'C' dimensions are from center of stone to the face of the sheathing/outside face of wall structure.
- Typical 'D' dimensions are 3/4"-1".
- Typical thru hole diameter is 1/16" larger than the fastener diameter. For example, using a 1/4"φ self tapping metal screw, the diameter would be 5/16"φ.
- Typical thru hole size is 1/2" larger than the welded pin diameter.

ALL MEMBRANES, WEEPS, SEALANT & FLASHING PER PROJECT MOISTURE CONTROL CONSULTANT