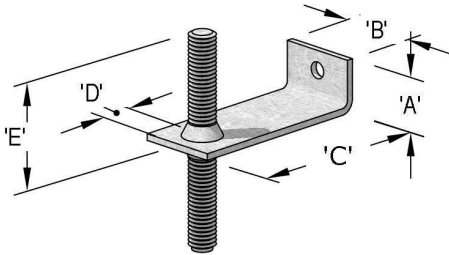


FASCIA/SOFFIT - DETAIL #1



**'L' STRAP W/ WELDED
ALL THREAD DOWEL PIN**

- Strap sizes per engineering requirements
- Typical 'A' dimensions are 1"-2".
- Typical 'B' dimensions are 1"-2".
- Typical 'C' dimensions are from center of stone to the face of the sheathing/outside face of wall structure.
- Typical 'D' dimensions are 3/4"-1".
- Typical 'E' dimensions are 1-1/2"-2".
- Typical thru hole diameter is 1/16" larger than the fastener diameter. For example, using a 1/4"φ self tapping metal screw, the diameter would be 5/16"φ

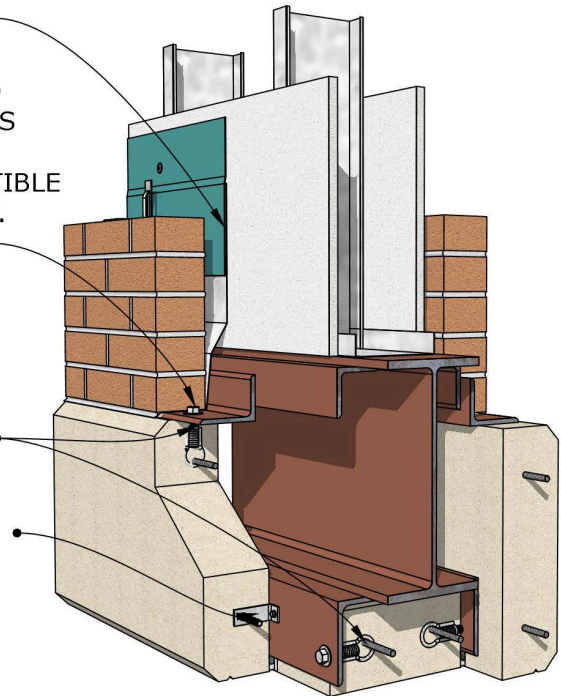
ALL MEMBRANES, WEEPS, SEALANT
& FLASHING PER PROJECT
MOISTURE CONTROL CONSULTANT

FLASHING
(BY OTHERS)

SEAL AROUND
PENETRATIONS
IN FLASHING
WITH COMPATIBLE
SEALANT, TYP.
(BY OTHERS)

ANGLES AND
BOLTED
CONNECTION
AS SPECIFIED
BY ENGINEER

'L' STRAP W/
DOWEL PIN



FASCIA/SOFFIT - DETAIL #2

